

CLIENT : EXPERIAN JAPAN K.K., TOKYO

FRANCE SAMPLE REPORT

ATTN OF : --

YOUR REF.: XXXXX

DATE: DD.MM.YYYYY

GENERAL INFORMATION

4XX 4XX XXX – 00XXX
Société Napoléon Bonaparte

Head office : XX AVENUE NICOLAS D'AVOUT
XX BOULOGNE BILLANCOURT

Logo :
Legal status : Limited company
Registered capital : XXXX,00 EUR
Date of creation : DD/MM/XXYY
Staff : XX
Commercial Register Number : NANXXRXX XX B 030XX
Intracommunity VAT Number :FR XXXXXX

Commercial brand : Napoléon Bonaparte
Phone number : + 00 33 (0)1 XX XX XX33
Fax number : +00 33 (0)1 XX XX XX 34
Internet website : www.Société Napoléontion.fr

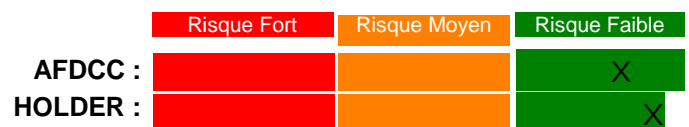
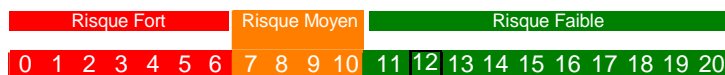
RISK ASSESSMENT

CASH FLOW : SOUND
PAYMENTS : REGULAR
PAYMENTS FAILURE : NONE

REQUESTED CREDIT: MAXIMUM
OUR ADVICE: 150 000 €

GCI GRADE: 12 / 20

FAILURE RATING : MEDIUM TERM RISK



SUMMARY

Business dealings are possible.

BUSINESS ENVIRONMENT

NAF Code : 4649Z **Field :** COMMERCE DE GROS DE PRODUITS CHIMIQUES
Business activity : Buying and trading/distribution of writing and marking products

SOCIÉTÉ NAPOLÉON is specialised in the distribution of specialty chemicals in various markets. With its offices and warehouses, SOCIÉTÉ NAPOLÉON covers the whole national territory.

SOCIÉTÉ NAPOLÉON dissolves solids in water or organic solvents; it is able to mix a wide range of products and produces diverse mixtures of liquid and solid products.

SOCIÉTÉ NAPOLÉON delivers the products in all size containers.

The products distributed are : acids and leys, active ingredients, anti foams, antioxidants, antistatic agents, binders, biocides and disinfectants, blowing agents, desiccants, recipients, fillers, flame retardants, flattening agents, free flowing agents, heat transfer fluids, intermediates, lubricants, phosphates, pigments and dyes, plasticizers, polymers, polyols, release agents, silicones, solvents, stabilizers, thickeners, water repellents, waxes, oils and fats. Customers are various industries : car industry, chemical industry, cosmetics manufacturers, detergent and cleaner manufacturers, construction business, firefighting, paper and cardboard industry, plastics, refineries, metal industry, water

The subject company distributes chemical products.

SOCIÉTÉ NAPOLEÓN DISTRIBUTION is also the sole distributor for Napoléon for the French, Belgian and Netherlandish markets.

Customers are retailers, superstores, hypermarkets and school stationery stores.

Terms of payments: up than 60 days.

At 31.MM.20YY, turnover increased by 12 %. Net profitability ratio amounted to 2.6 %. Financial structure is well-balanced.

The 2011 fiscal year is said to be steady in comparison with 20YY.

MANAGEMENT

Mr Alain NAPOLEÓN - 08/MM/19YY - Chairman of the board

Other companies: Manager – 44383XXXX - SAMPLE Berthier - - -
Manager – 444750XXX- SAMPLE NAPOLEÓN -
Chairman of the board – 5292XXX - SOCIÉTÉ NAPOLEÓN HOLDING - - -

SHAREHOLDERS

NAME / COMPANY NAME	CITY / COUNTRY	%
FAMILLE SOCIÉTÉ NAPOLEÓN	/	100,00

SECONDARY ESTABLISHMENTS

SOCIÉTÉ NAPOLEÓN has its headquarters in LE BLANC KELLERMANN, an agency in GENAS near LYON and a warehouse in REIMS.

BACKGROUND / LEGAL INFORMATIONS

Société Napoléon was founded in 1970 as a classical chemical trading company. Having started with one company, it soon developed into a prominent player in the field by responding to the need for modern and adequate distribution facilities. Its growth was the result of strategic acquisitions of smaller and medium-sized European distributors which guaranteed a substantial expansion of its products and services and geographical coverage of the European market. This expansion not only focused on chemical products but also on other segments like food ingredients and technical products. Today Société Napoléon is present in 13 countries with 30 locations (offices, warehouses, distribution centres and production facilities).

BANKS

BNP PARIBAS PARIS LECOURBE
30488 0

+00 33 (0)1XX10XXXX +00 33(0)1 46 XXXX05

SOCIETE GENERALE BOULOGNE BILLANCOURT
30003 0

+00 33 (0)1XX10XXXX +00 33(0)1 46 XXXX05

The bank partners did not wish to give financial information about the subject company.

Cash flow position: sound

Payments: prompt

Default in payments: no

Credit limit: 150 000 €

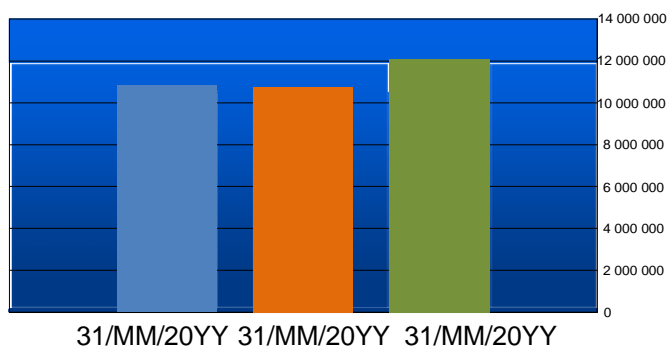
No payment failures have been reported.

KEY DATA

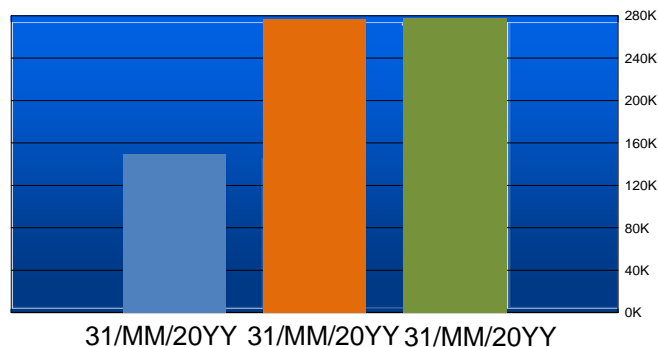
Date of balance sheet	31/11/2022	Var. (en %)	31/11/2021	Var. (en %)	31/11/2020
Number of months	12		12		12
Currency	Euro		Euro		Euro
Turnover	XX 083 694	12,21	XX 768 818	-0,45	XX 817 334
Export turnover	36 054	131,83	15 552	-13,72	18 025
Added value	3 778 551	25,59	3 0XX 590	-3,07	3 XX3 743
Gross operating profit	902 140	178,61	323 805	-35,59	502 755
Operating profit	775 732	190,87	266 695	-43,26	470 052
Operating result	403 317	5,97	380 610	79,44	212 108
Exceptional income	19 775	-89,13	181 981	9,07	166 843
Net income	277 538	0,36	276 545	85,43	149 138
Cash flow	408 628	143,01	168 154	-30,09	240 518
Working capital	3 XX4 874	-15,84	4 XX4 005	1,25	4 XX7 383
Working capital requirement	3 XX2 176	-7,64	3 683 429	-13,45	4 255 685
Cash flow situation	1 XX4 680	-64,55	3 XX4 431	89,91	1 XX5 720
Customer credit (in days)	75	-13,79	87	-17,14	105
Supplier credit (in days)	87	-6,45	93	-4,12	97
Shareholder's equity	5 XX9 451	-3,65	6 XX2 001	-1,52	6 1XX 286
Financial autonomy ratio	61	-5,60	65	-0,28	65
Financial charges (% Turnover)	0	0,00	0	0,00	0

EVOLUTION INDICATORS

Turnover



Net income



SYNTHESED BALANCE SHEETS

ASSETS	31/MM/20YY	Var. (en %)	31/MM/20YY	Var. (en %)	31/MM/20Y
Net fixed asset	1 XX 3 097	42,64	1 XX4 083	-3,06	1 XX 3 942
Goodwil	1 XX 9 030	0,00	0	0,00	0
Real estate : land	0	-100,00	1 XX 9 030	0,00	0
Real estate : buildings	0	0,00	0	-100,00	1 029 030
Net current assets	7 XX 2 034	-4,54	8 XX 3 006	-0,15	8 XX 5 338
Inventories	2 XX 3 851	119,56	1 167 743	-25,27	1 562 708
TOTAL ASSEST	9 XX 5 131	1,78	9 XX 7 089	-0,55	9 XX 9 280

LIABILITIES					
Shareholders'equity	5 XX 9 451	-3,65	6 XX 2 001	-1,52	6 196 286
Registered capital	1 615 212	0,00	1 615 212	0,00	1 615 212
Net profit / loss	277 538	0,36	276 545	85,43	149 138
Others reserves	0	0,00	0	0,00	0
Fixed capital	5 936 131	-2,72	6 XX 2 047	-2,58	6 263 716
Debts	3 XX 5 678	0,00	0	0,00	0
Debts to credit institutions	0	0,00	0	0,00	0
Various financial debts	0	-100,00	46	-88,64	405
Suppliers	2 XX 2 225	22,89	2 XX 0 339	-7,95	2 XX 7 395
Fiscal and social debts	519 603	-22,48	670 300	42,17	471 468
Other debts	370 654	-0,71	373 302	8,60	343 728
of witch					
- Long an medium term	0	0,00	0	0,00	0
- Short term	3 XX 5 675	11,18	3 XX 3 986	0,94	3 XX 2 995
- Bank facilities	0	0,00	0	0,00	0
- Group and shareholders	0	-100,00	3 323 987	0,00	0
TOTAL LIABILITIES	9 XX 1 811	2,06	9 XX 7 091	-1,25	9 XX 6 309

PROFIT OR LOSS	31/MM/20YY	Var. (en %)	31/MM/20YY	Var. (en %)	31/MM/20YY
Operating income	XX 116 763	-1	XX 299 867	-16	XX713 022
Sales	XX 413 695	12,02	11 081 614	0,10	11 071 012
Goods sold	0	0,00	0	0,00	0
Services sold	-330 001	-5,50	-312 796	-23,30	-253 677
Net turnover	XX 083 694	12,21	XX 768 818	-0,45	XX 817 334
- including export :	36 054	131,83	15 552	-13,72	18 025
Stocked production	0	-100,00	XX1 979	0,00	0
Capitalised production	0	0,00	0	-100,00	2 223 852
Operating subsidies	0	0,00	0	0,00	0
Provisions	31 037	-68,64	98 984	0,00	0
Other income	2 032	-99,74	790 086	-52,74	1 671 836
Operating cost	XX 341 028	16,33	9 749 324	XX,48	XX 745 196
Purchase of goods	7 XX 5 314	50,38	4 XX 4 245	-1,92	5 XX 0 603
Depreciation of stocked goods	-1 347 389	-440,55	395 646	350,97	87 732
Purchase of raw material	0	0,00	0	0,00	0
Depreciation of raw materiel	0	0,00	0	0,00	0
Other expenditures	2 XX 7 218	-7,91	2 XX 40 337	-6,33	2 XX 5 257
- including equipment leasing	0	-100,00	151 842	0,00	0
- including property leasing	0	0,00	0	-100,00	27 708
Taxes	194 868	0,00	0	0,00	0
Salaries and wages	1 XX 6 620	831,90	197 083	0,00	0
Payroll taxes	844 923	-50,23	1 XX 7 616	XX 6,30	198 250
Provision depreciation fixed asset	107 984	21 982,62	489	-99,93	XX 0 902
Provision for loss in value tangible	0	-100,00	66 402	751,31	7 800
Provision for loss in value assets	17 461	0,00	0	-100,00	62 897
Provision for liabilities-financial	30 000	9,07	27 506	0,00	0
Other cost and charges	4 029	0,00	0	-100,00	31 755
Operating profit	XX 5 732	190,87	XX6 695	- XX,26	470 052
Assigned profit	0	-100,00	135 293	737,83	16 148
Loss	0	0,00	0	-100,00	70 298
Investment income	56 023	0,00	0	0,00	0
Financial expenses	XX8 438	XX,79	XX5 896	0,00	0
Financial result	-372 415	-426,92	113 915	XX4,16	-2 XX944,00
Pretax profit / loss	XX3 317	5,97	XX 610	79,44	XX 12
Extraordinary profit / loss	19 775	-89,13	181 981	79,44	166 843
Employee profit sharing	0	-100,00	47 779	-88,75	424 787
Corporate/company tax	145 554	0,00	0	100,00	-35 262
Net profit / loss	XX 7 538	0,36	XX 6 545	85,43	149 138

*** END OF THE REPORT ***

Streng vertraulich - Information erteilt
gemäss unseren Geschäftsbedingungen
und Art. 13.2 DSG

Strictelement confidentiel - information
transmise selon nos conditions générales
et l'art. 13.2 LPD

Strettamente confidenziale - informazioni
trasmesse secondo le nostre condizioni
generale e l'art. 13.2. LPD

Strictly confidential - information
transmitted in accordance with our
business conditions and art. 13.2. LDP